



CREATING THE PERFECT ELEVATOR

KONE Design Collection Standard

STANDARD CAR DESIGN COLLECTION

Classic Chic

Rich, timeless designs that balance the natural with the modern.



22001

CEILING: CL88 Silver (ST4) brushed stainless steel, **WALL B:** Silver (MP6) satin stainless steel, **WALL C:** Cappuccino (L103) 3D laminate, **WALL D:** Silver (MP6) satin stainless steel, **FLOOR:** Bamboo (D31) PVC, **HANDRAIL:** HR62 Asturias Satin (F1) scotch brite steel, **SKIRTING:** Silver (ST4) brushed stainless steel



22002

CEILING: CL70 Silver (ST4) brushed stainless steel, **WALL B:** Silver (MP1) mirror polished stainless steel, **WALL C:** Strawberry Red (L104) 3D laminate, **WALL D:** Silver (MP1) mirror polished stainless steel, **FLOOR:** Lava Stone (D26) PVC, **HANDRAIL:** HR62 Asturias Satin (F1) scotch brite steel, **SKIRTING:** Silver (ST4) brushed stainless steel



22003

CEILING: CL193 White painted steel, **WALL B:** Copper (MP4) mirror polished stainless steel, **WALL C:** Gream White (L102) 3D laminate, **WALL D:** Copper (MP4) mirror polished stainless steel, **FLOOR:** Rocky Gray (D25) PVC, **HANDRAIL:** HR62 Asturias Satin (F1) scotch brite steel, **SKIRTING:** Silver (ST4) brushed stainless steel



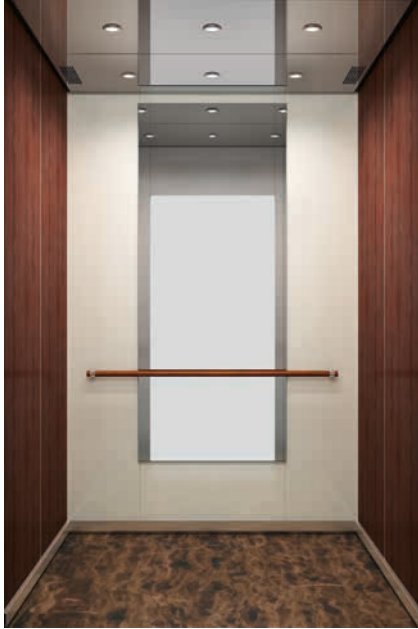
22004

CEILING: CL95 Silver (ST4) brushed stainless steel, **WALL B:** Golden (MP2) mirror polished stainless steel, **WALL C:** Black (L101) 3D laminate, **WALL D:** Golden (MP2) mirror polished stainless steel, **FLOOR:** Galaxy (D30) PVC, **HANDRAIL:** HR62 Golden (MP2) brushed stainless steel, **SKIRTING:** Silver (ST4) brushed stainless steel

STANDARD CAR DESIGN COLLECTION

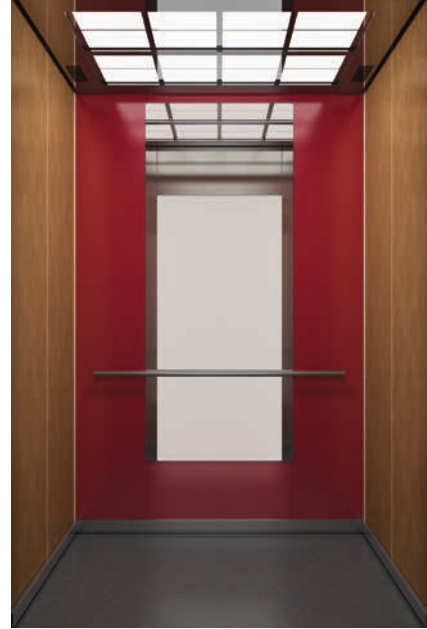
Cool Vintage

Organic designs for a nostalgic yet progressive look and feel.



22009

CEILING: CL88 Silver (MP1) mirror polished stainless steel, **WALL B:** Cherry (L90) wood pattern laminate, **WALL C:** Wool Gray (PP20) painted steel, **WALL D:** Cherry (L90) wood pattern laminate, **FLOOR:** Saturn Brown (D27) PVC, **HANDRAIL:** HR71 Dark wood (WDF), **SKIRTING:** Silver (ST4) brushed stainless steel



22010

CEILING: CL70 Silver (MP1) mirror polished stainless steel, **WALL B:** Cane (L88) wood pattern laminate, **WALL C:** Cosmo Red (METP2) metallic painted steel, **WALL D:** Cane (L88) wood pattern laminate, **FLOOR:** Lava Stone (D26) PVC, **HANDRAIL:** HR61, Asturias Satin (F1) scotch brite steel, **SKIRTING:** Silver (ST4) brushed stainless steel



22018

CEILING: CL193 Silver (ST4) brushed stainless steel, **WALL B:** Sand Oak (L89) wood pattern laminate, **WALL C:** Pure White (PP10) painted steel, **WALL D:** Sand Oak (L89) wood pattern laminate, **FLOOR:** Rocky Gray (D25) PVC, **HANDRAIL:** HR71 Light wood (WLF), **SKIRTING:** Silver (ST4) brushed stainless steel



22019

CEILING: CL88 Silver (ST4) brushed stainless steel, **WALL B:** Colorado White (L91) wood pattern laminate, **WALL C:** Champagne (METP1) metallic painted steel, **WALL D:** Colorado White (L91) wood pattern laminate, **FLOOR:** Moon White (D24) PVC, **HANDRAIL:** HR61 Asturias Satin (F) scotch brite steel

STANDARD CAR DESIGN COLLECTION

Industrial Chic

Sophisticated, captivating interiors that reflect , reward, and inspire.



22005

CEILING: CL191 Silver (ST4) brushed stainless steel, **WALL B:** Fresh Green (PP22) painted steel, **WALL C:** Silver (ST4) brushed stainless steel, **WALL D:** Fresh Green (PP22) painted steel, **FLOOR:** Legno (DG05) patterned PVC, **HANDRAIL:** HR65, Asturias Satin (F1) scotch brite steel



22006

CEILING: CL70 Silver (MP1) mirror polished stainless steel, **WALL B:** Cosmo Red (METP2) metallic painted steel, **WALL C:** Silver (ST4) brushed stainless steel, **WALL D:** Cosmo Red (METP2) metallic painted steel, **FLOOR:** Blusher (DG06) PVC, **HANDRAIL:** HR65, Asturias Satin (F1) scotch brite steel



22007

CEILING: CL193 Silver (ST4) brushed stainless steel, **WALL B:** Champagne (METP1) painted steel, **WALL C:** Silver (MP6) satin stainless steel, **WALL D:** Champagne (METP1) metallic painted steel, **FLOOR:** Puzzle Bright (DG04) PVC, **HANDRAIL:** HR65, Asturias Satin (F1) scotch brite steel



22017

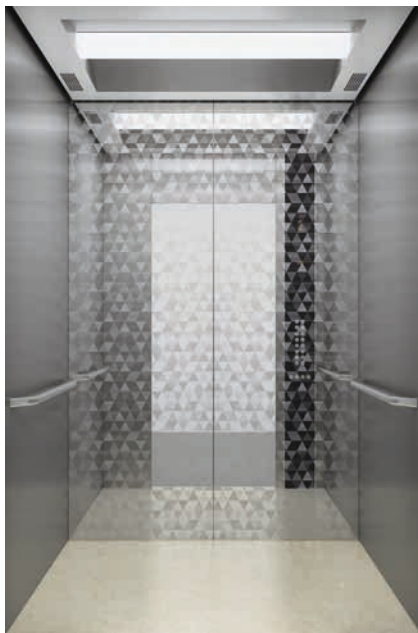
CEILING: CL95 Silver (MP1) mirror polished stainless steel, **WALL B:** Pure White (PP10) painted steel, **WALL C:** Silver (MP6) satin stainless steel, **WALL D:** Pure White (PP10) painted steel, **FLOOR:** Chessboard (DG02) PVC, **HANDRAIL:** HR65, Asturias Satin (F1) scotch brite steel



22020
CEILING: CL191 Silver (ST4) brushed stainless steel, **WALL B:** Silver (ST4) brushed stainless steel, **WALL C:** Silver Pop (ST28S) etched stainless steel, **WALL D:** Silver (ST4) brushed stainless steel, **FLOOR:** Light Brown (D6) PVC, **HANDRAIL:** HR64 Asturias Satin (F1) scotch brite steel



22014
CEILING: CL70 Silver (MP1) mirror polished stainless steel, **WALL B:** Silver (ST4) brushed stainless steel, **WALL C:** Silver Ornament (ST38S) etched stainless steel, **WALL D:** Silver (ST4) brushed stainless steel, **FLOOR:** Mars Red (D29) PVC, **HANDRAIL:** HR64 Asturias Satin (F1) scotch brite steel



22015
CEILING: CL193 Silver (ST4) brushed stainless steel, **WALL B:** Silver (ST4) brushed stainless steel, **WALL C:** Silver Diamond (ST34S) etched stainless steel, **WALL D:** Silver (ST4) brushed stainless steel, **FLOOR:** Moon White (D24) PVC, **HANDRAIL:** HR64 Asturias Satin (F1) scotch brite steel



22016
CEILING: CL88 Silver (ST4) brushed stainless steel, **WALL B:** Silver (ST4) brushed stainless steel, **WALL C:** Silver Swing (ST26S) etched stainless steel, **WALL D:** Silver (ST4) brushed stainless steel, **FLOOR:** Galaxy (D30) PVC, **HANDRAIL:** HR64 Asturias Satin (F1) scotch brite steel

Accessories

CEILINGS

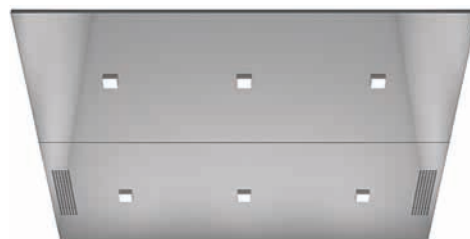


CL70

Lighting: T5 fluorescent tubes

Finishing: **ST4** Silver brushed stainless steel

MP1 Silver mirror polished stainless steel



CL97

Lighting: LED square

Finishing: **ST4** Silver brushed stainless steel

MP1 Silver mirror polished stainless steel

MP2 Golden mirror polished stainless steel



CL191

Lighting: LED spot and T5 fluorescent tubes

Finishing: **ST4** Silver brushed stainless steel

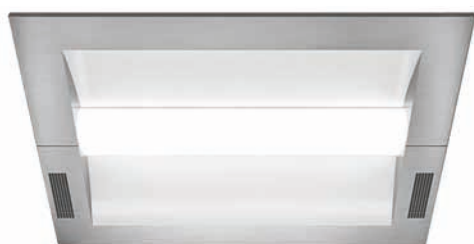
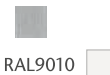


CL192

Lighting: T5 fluorescent tubes

Finishing: **ST4** Silver brushed stainless steel

Center panel finishing: **PP10** White painted RAL9010



CL193

Lighting: T5 fluorescent tubes

Finishing: **W** Textured film

METP Metallic painted steel



HANDRAILS

Stainless Steel



HR62
Square silver brushed



HR62
Square golden mirror polished
stainless steel



HR64
Bended silver brushed
EN81-70 compliant
AS1735.12 compliant
G compliant



HR64
Bended golden mirror polished
stainless steel



HR65
Bended silver brushed



HR65
Bended golden mirror polished
stainless steel

Brushed stainless steel



HR81
Self standing handrail
Silver brushed



HR81
Self standing handrail
Golden brushed

Wood



HR71**
Round
Light Wood with brushed
stainless steel fixings (WLF)



HR71**
Round
Dark Wood with brushed
stainless steel fixings (WDF)

** Golden brushed stainless steel
fixings also available

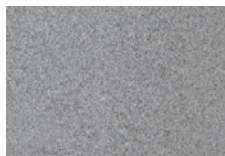
Materials

WALLS

Brushed stainless steel

ST2*
Golden

Satin stainless steel

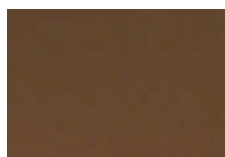
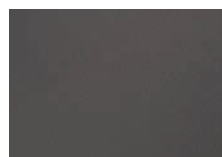
MP6
Silver

Textured stainless steel

TS2*
Flemish Linen

* Available also for front wall

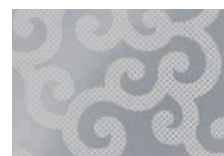
Mirror polished stainless steel

MP1*
SilverMP2*
GoldenMP4*
CopperMP5*
Black

Indirect steel

ST21S*
SilverST21G*
Golden

Etched stainless steel

ST26S
Silver SwingST28S
Silver PopST31S
Silver High-riseST32S
Silver PleatST33S
Silver CurveST34S
Silver DiamondST35S
Silver HarmonyST36S
Silver GraphicsST37S
Silver ChainST38S
Silver OrnamentST26G
Golden SwingST28G
Golden PopST31G
Golden High-riseST32G
Golden PleatST33G
Golden CurveST34G
Golden DiamondST35G
Golden HarmonyST36G
Golden GraphicsST37G
Golden ChainST38G
Golden Ornament

WALLS

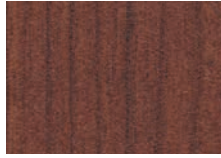
Wood pattern laminate



L88
Cane



L89
Sand Oak



L90
Cherry



L91
Colorado White

3D laminate



L101
Black



L102
Cream White



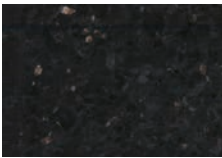
L103
Cappuccino



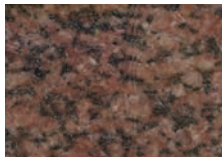
L104
Strawberry Red

FLOORS

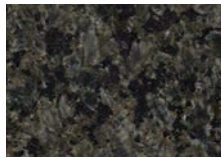
Real stone



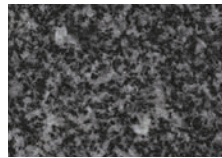
M3R
Black Golden Sand



G1R
Rose Black

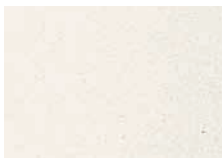


G2R
Green Black

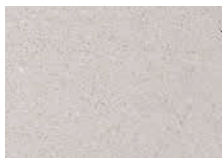


G4R
Gray Black

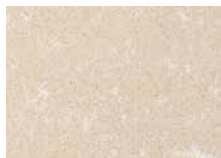
Artificial stone



M4R
Natural White



M5R
Pebble Gray



M7R
Light Sand



M8R
Shell White

Materials

Steel



				*Also available as acid proof
Z Primer painted	F1 Asturias Satin	ST4* Silver	ST2 Golden	
ST21S Silver	ST21G Gold			
TS2 Flemish Linen	MP1 Silver	MP2 Golden	MP4 Copper	MP5 Black

Painted steel



PP10 White painted RAL9010	PP18 Linen Brown	PP20 Wool Gray	PP22 Fresh Green
METP1 Champagne (metallic)	METP2 Chile Red (metallic)		

Etched stainless steel



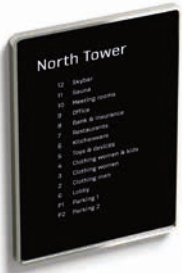
ST26S Silver Swing	ST28S Silver Pop
ST31S Silver High-rise	ST37S Silver Chain

Glass



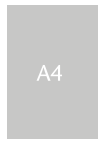
Transparent	ST4 Silver (Frame color)

TENANT DIRECTORY

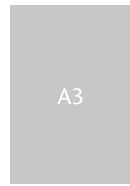


The printed tenant directory is completely customizable and can be easily updated according to the customer's needs.

Sizes



TD1



TD2

Directories can be installed either vertically or horizontally.

TD1
Frame finishing: satin aluminum
(only one finishing in SOC)

DIGITAL INFO SCREEN



IS08
Standard version, 8.4" display **P**
Surface mounted

IS15
Premium version, 15" display **P**
Surface mounted

Additional features may be available. Consult your sales representative for more information.

Frame finishing: satin or mirror polished stainless steel

BUFFER RAILS

SKIRTING



BR1
Steel



BR1
Wood

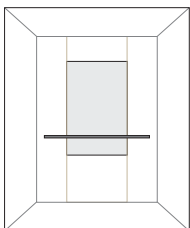


ST4
Silver

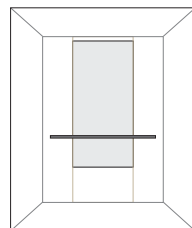


ST2
Gold

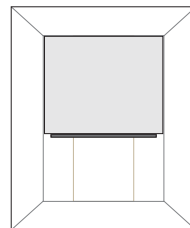
MIRRORS



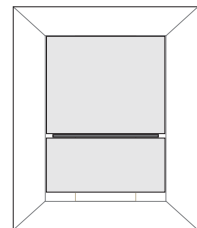
MR1
Partial width, partial height



MR1
Partial width, medium height



MR1
Full width, partial height



MR1
Full width, full height



KONE provides innovative and eco-efficient solutions for elevators, escalators, automatic building doors and the systems that integrate them with today's intelligent buildings.

We support our customers every step of the way; from design, manufacturing and installation to maintenance and modernization. KONE is a global leader in helping our customers manage the smooth flow of people and goods throughout their buildings.

Our commitment to customers is present in all KONE solutions. This makes us a reliable partner throughout the life cycle of the building. We challenge the conventional wisdom of the industry. We are fast, flexible, and we have a well-deserved reputation as a technology leader, with such innovations as KONE MonoSpace[®], KONE NanoSpace[™] and KONE UltraRope[®].

KONE employs close to 50,000 dedicated experts to serve you globally and locally.

KONE Corporation
www.kone.com

KONE OFFICES IN SOUTH EAST ASIA

Indonesia - PT. KONE Indo Elevator

Jakarta (main office)	+61 21 6570 3990
Bali	+62 361 895 7806
Bandung	+62 22 8606 0804
Makassar	+62 411 466 2780
Surabaya	+62 31 855 6383
Yogyakarta	+62 274 284 0089

www.kone.co.id

Malaysia - KONE Elevator (M) Sdn Bhd

Kuala Lumpur (main office)	+603 7494 7500
Johor Bahru	+607 559 0885
Penang	+604 656 3222
Sabah	+6015 4818 9128

www.kone.my

Philippines - KPI Elevators, Inc.

Makati City (main office)	+632 811 2929
Cebu	+63 32 233 5790

www.kone.ph

Singapore - KONE Pte Ltd

Singapore	+65 6424 6246
-----------	---------------

www.kone.sg

Thailand - KONE Public Company Limited

Bangkok	+66 2784 6500
---------	---------------

www.kone.co.th

Vietnam - KONE Vietnam LLC

Ho Chi Minh (main office)	+84 8 3997 5373
Hanoi	+84 4 3974 9445

www.kone.vn

DISTRIBUTORS IN SOUTH EAST ASIA

Brunei

Yusoki Sdn Bhd	+673 2790037
----------------	--------------

Cambodia

Comin Khmere	+855 23 885 640
--------------	-----------------

Laos

Comin Asia	+856 30 777 4777
------------	------------------

Myanmar

Octagon Automobile & Machinery Services Co., Ltd	+95 9 8631438
--	---------------

Sarawak(Malaysia)

Elebest Engineering Sdn Bhd	+60 82 365836
-----------------------------	---------------